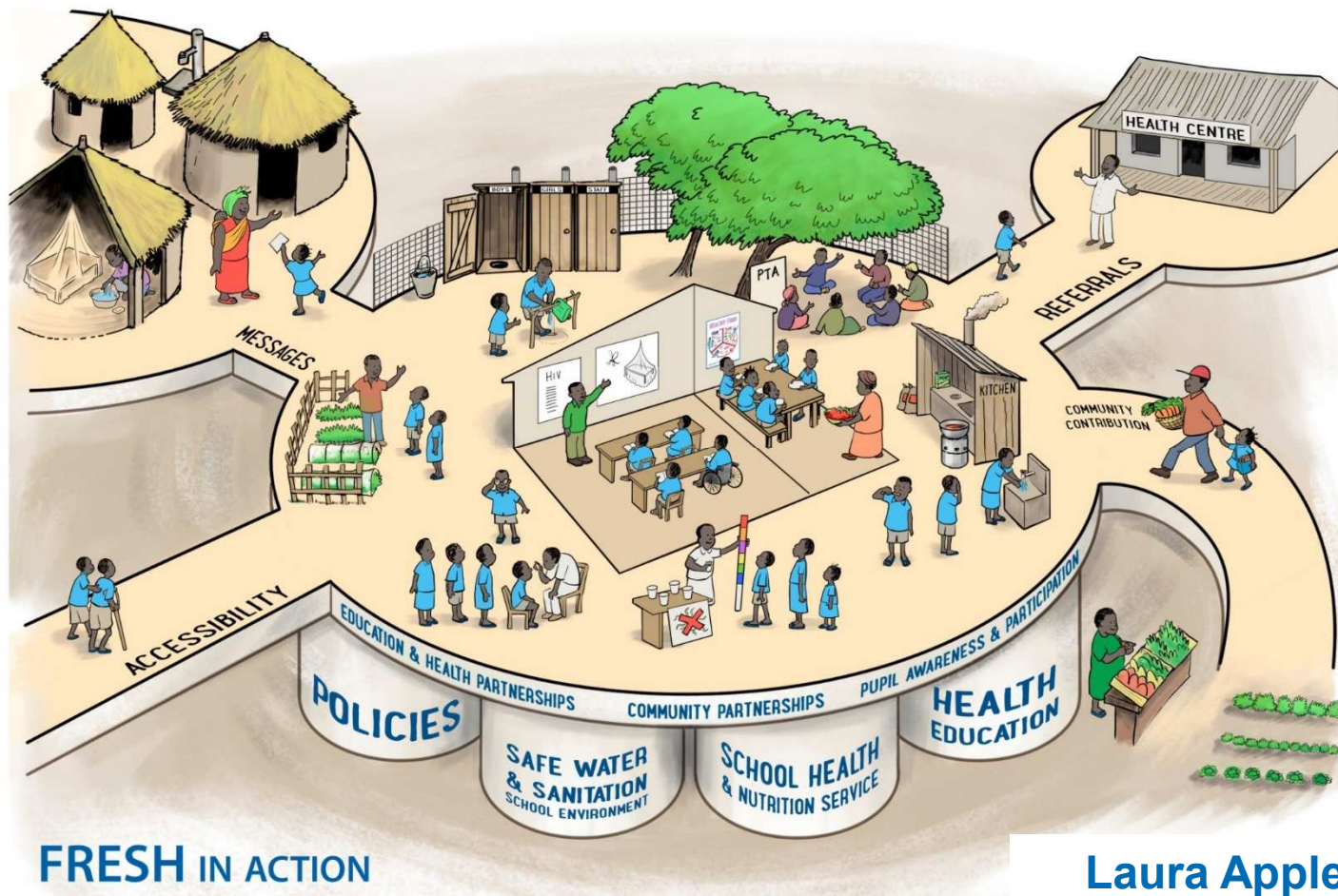


The School as a Platform for Parasite Control

“reaching the unreachable”



Laura Appleby, PhD

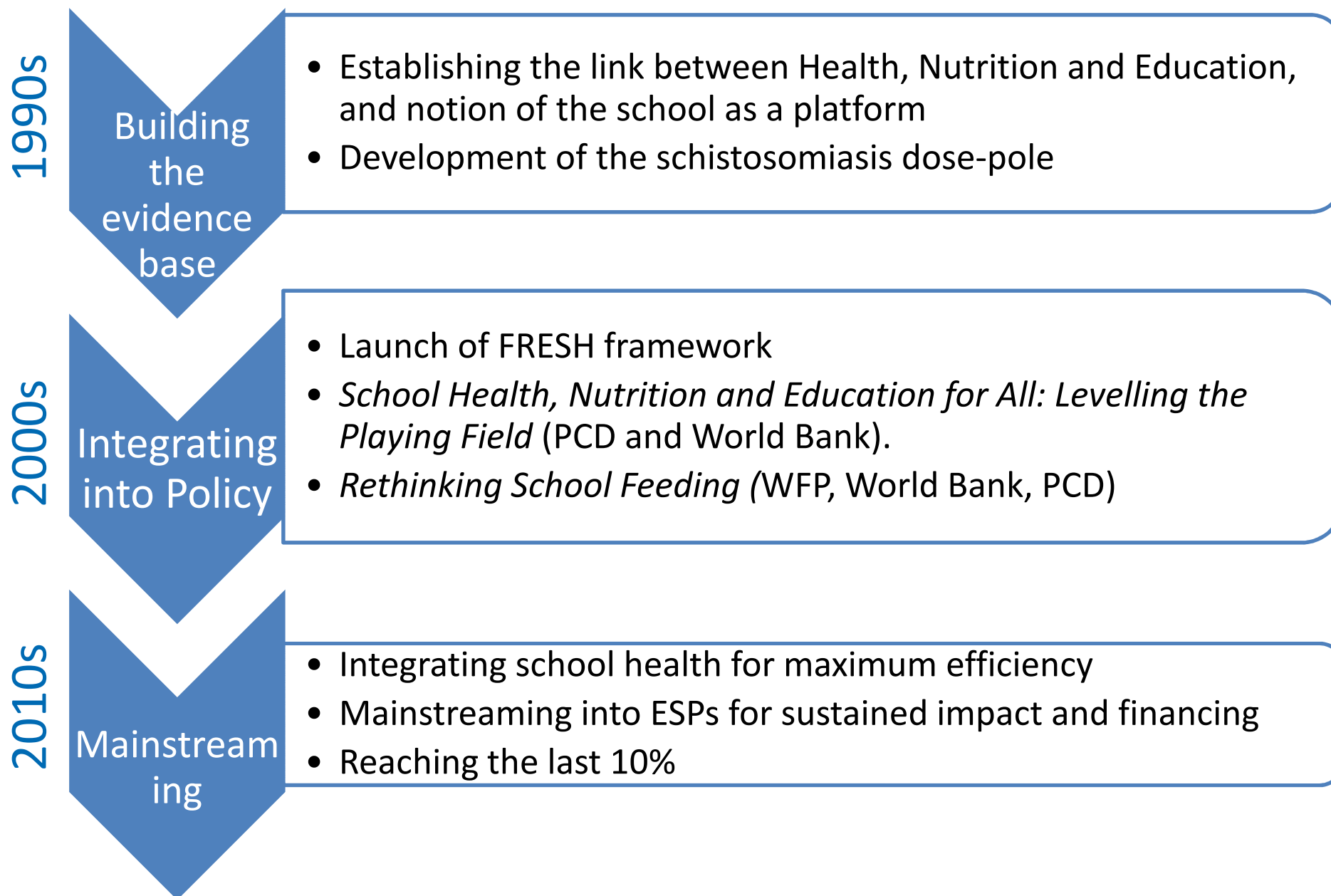
Imperial College
London



LONDON CENTRE FOR
NEGLECTED TROPICAL
DISEASE RESEARCH

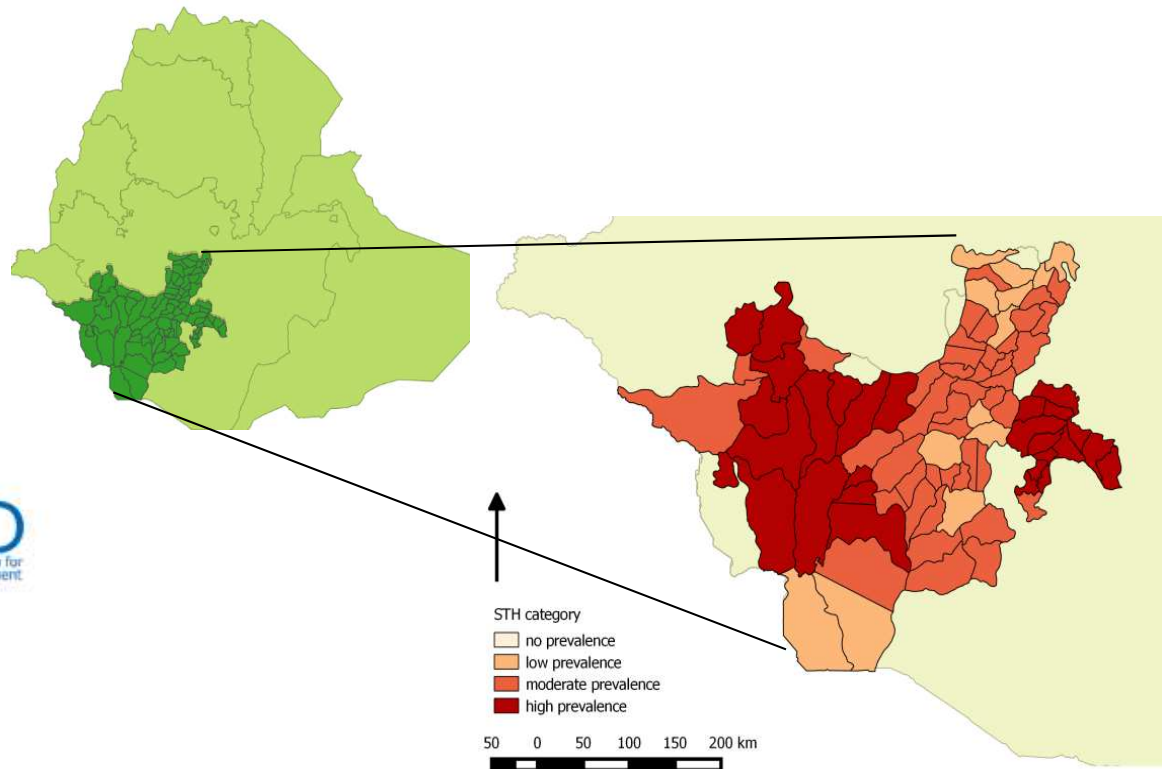


PCD School Health Activities To Date:



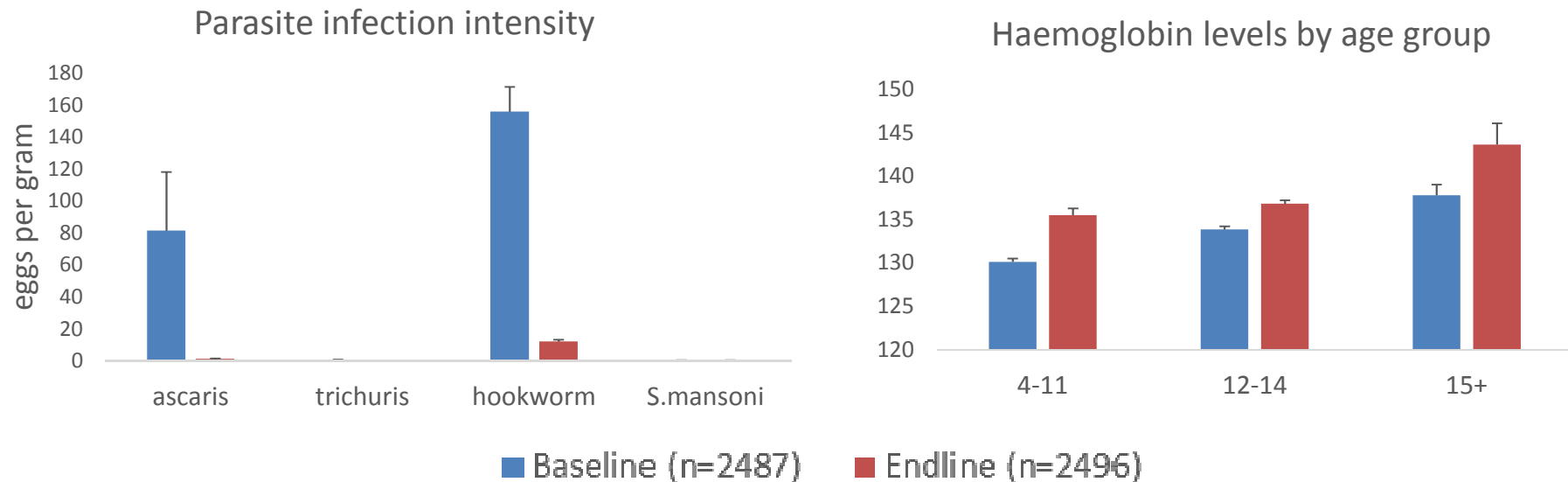
Integrating SHN

The Enhanced School Health Initiative (ESHI)



ESHI

a 4 year programme in Ethiopia integrating deworming with school feeding and WASH



SHN Combined Cost per Child (HGSEF, WASH and Deworming)

Overall WASH and deworming:

\$6.68/chd/yr

\$1.05 in CC and \$0.06 in government contribution

Deworming:

\$0.40 per child (drugs were donated)

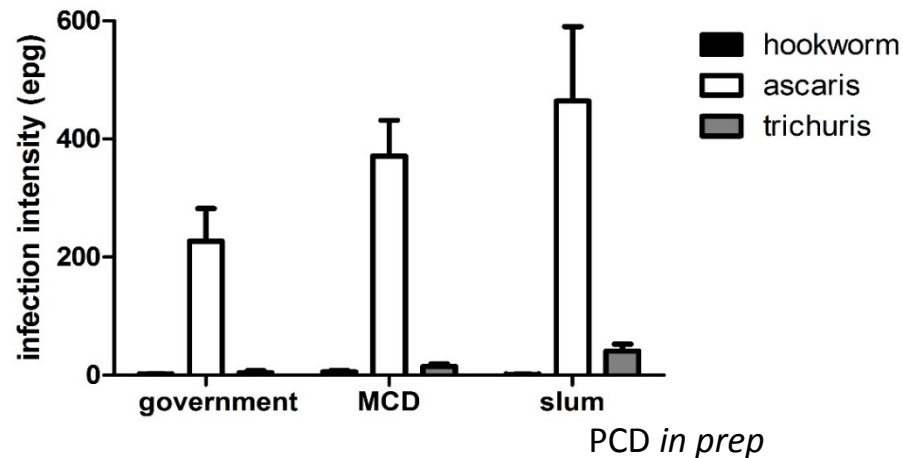
Made up of transport and salary costs

Overall:

\$35.15 per child per year.

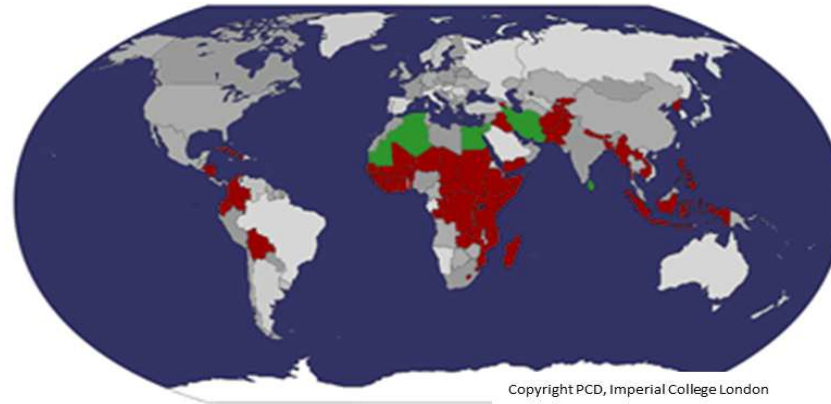
Priorities for Progress:

- There is a higher impact of worm burden in children who are undernourished
 - Children in marginalized areas
 - Children in food insecure areas
 - Out of school children eg in Delhi 52% of the population in the city lives in slums



→ How to reach the last 10%?

Engaging in Partnerships to reach the unreached



Country	WFP beneficiaries dewormed	Number dewormed	Coverage by WFP in 2008
Afghanistan	5,038,142 (2008)	5,053,293	99.7%
Mozambique	220,000	253,272	86.9%
Cambodia	2,377,493	2,429,114	97.9%
Nepal	525,374	860,150	61.1%

Data for 2008 from WHO databank and WFP reported numbers

Schools as a wider platform

*'At school **all children are now equal.***

*'I have noticed in the past three years the **decrease of diarrhoeal diseases***

*'The best change in the community is the student **motivation to attend school***

*'The activities performed in the school have become a **model for the community**, such as the construction of latrines and the behaviour change surrounding personal hygiene'*

*'Once we have learnt how to make our clothes clean and wash our hands why would we stop?
The behavioural part of the project will continue*



Find out more @

www.imperial.ac.uk/pcd & www.schoolsandhealth.org



www.facebook.com/PartnershipforChildDevelopment

[@schoolhealth](https://twitter.com/schoolhealth)

